

HEATBASE Ltd FACTSHEET 12

Oil Appliance Flue Termination

Version 4 September 2016

Location of flue terminations of oil fired appliances, minimum separation distances in mm and additional recommendations for the termination of condensing boiler flues to address Plume Nuisance				
Location of Flue outlet.		Appliance with pressure jet burner	Appliance with vaporising burner	Additional distance that may need to be considered for condensing boiler flues. See diagram 3 overleaf & Also see notes 7, 8, 9 below
See Notes below (1) and Diagram 1 overleaf				
A	Below an opening(2,3)	600mm	Not Allowed	1000mm diagram 3 (e)
B	Horizontally to an opening(2,3)	600mm	Not allowed	1000mm diagram 3 (e)
C	Below a plastic/painted gutter, drainage pipe or eaves or balcony if combustible material has been protected(4)	75mm	Not allowed	1000mm diagram 3 (e)
D	Below a plastic/painted gutter, drainage pipe or eaves or balcony if combustible material has not been protected	600mm	Not allowed	1000mm diagram 3 (e)
E	From vertical sanitary pipework	300mm	Not allowed	No additional distance
F	From an external or internal corner or from a surface or boundary alongside the terminal	300mm	Not allowed	No additional distance
G	Above ground or balcony level	300mm	Not allowed	No additional distance
H	From a surface or boundary facing the terminal	600mm	Not allowed	2500mm diagram 3 (f)
J	From a terminal facing a terminal	1200mm	Not allowed	No additional distance
K	Vertically from a terminal on the same wall	1500mm	Not allowed	No additional distance
L	Horizontally from a terminal on the same wall	750mm	Not allowed	No additional distance
M	Above the highest point of an intersection of a roof	600mm (6)	1000mm (5)	No additional distance
N	From a vertical structure to the side of a terminal	750mm (6)	2300mm	No additional distance
O	Above a vertical structure which is less than 750mm (pressure jet burner) or 2300mm (vaporising burner) horizontally from the side of the terminal	600mm (6)	1000mm (5)	No additional distance
P	From a ridge terminal to a vertical structure on the roof	1500mm	Not allowed	No additional distance
Q	Above/below or to the side of any opening on a flat or sloping roof	600mm	600mm	1000mm diagram 3 (d)
R	Below any opening on a sloping roof	2000mm	2000mm	Not recommended dia. 3(c)

Notes:

1. Terminals should only be positioned on walls where appliances have been approved for such configurations when tested in accordance with BS EN 303-1:1999 or OFTEC standards OFS A100 or OFSA101.
2. **An opening means an openable element, such as an openable window or door, or permanent opening such as a permanently open air vent.**
3. **Notwithstanding the dimensions above, a terminal should be at least 300mm from combustible material, e.g. a window frame or the wall of a building with less than 30 minutes fire resistance.**
4. **A way of providing protection of combustible material would be to fit a heat shield at least 750mm wide.**
5. Where a terminal is used with a vaporising burner, the terminal should be at least 2300mm horizontally from the roof.
6. **Outlets for vertical balanced flues in locations M, N and O should be in accordance with manufacturer's instructions.**
7. Condensing boiler flue terminals must not be located under car ports or under a roof window. Diagram 3 (a)
8. Condensing boiler flue terminals should be located at least 1000mm from the top and any side of a roof window. Diagram 3 (d)
9. **Condensing boiler flue terminals sited at low level (under 2.1m) should not be positioned near public footways, frequently used access routes and at least 2500mm away from a car parking space or patio (hard surfaced area). Diagram 3 (b)**
10. **Flue terminals at low level (under 2.1m) should also incorporate a flue cage.**

Flue terminals should also be positioned a minimum of 1800mm from a Domestic Oil tank under 3500 Litres, 2000mm from a Non-Domestic Oil tank under 3500 Litres and 6000mm from a Domestic or Non-Domestic Oil tank of 3501 Litres or more.

Diagram 1 Location and distances of Flue Outlet

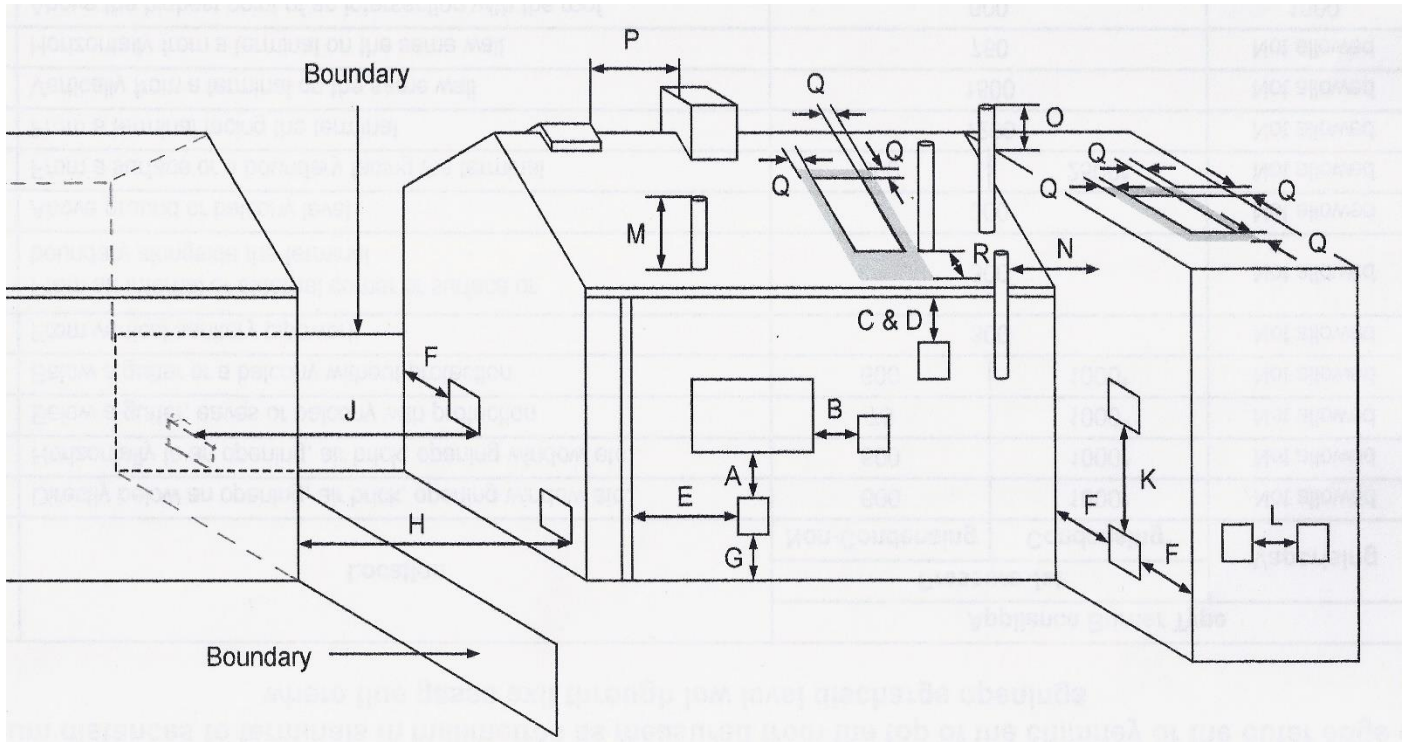


Diagram 2 Flues should not pass through the shaded areas below

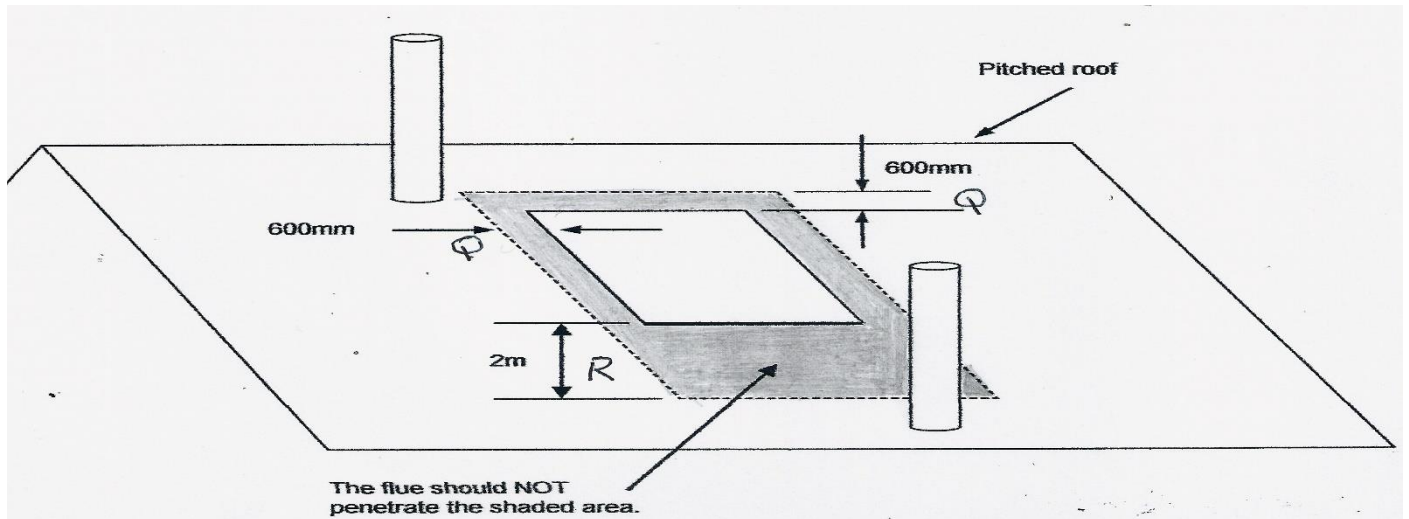


Diagram 3 Additional recommendations for the termination of condensing boiler flues to address Plume Nuisance

